

CAMP GUIDE 2014



Rawson Village

Gippsland • Victoria • Australia



**Introducing Rawson Village...
An inspiring location for your next camp.**



Rawson Village is a School Camp and Group Accommodation Centre located north of the Latrobe Valley, near Walhalla in Gippsland, 1.5 hours drive from Melbourne.

Rawson Village specializes in hosting school camps of all types, from the earliest grades at primary level through to Year 12, from a Year 7 orientation program to an adventure camp for primary children, to study conferences and retreats for VCE/VCAL students.



Rawson Village is accredited by the Australian Tourism Accreditation Program (ATAP) under the National Tourism Accreditation Framework (NTAF).



Outdoor Education



Activities

- ▶ High Ropes & Intermediate Ropes Courses
- ▶ Climbing/Abseiling Tower
- ▶ Flying Fox
- ▶ Guided Hiking & Bushwalking
- ▶ Canoeing & Sports Rafting
- ▶ The AMAZING RACE in Historic Gold Mining Township Walhalla
- ▶ Mountain Biking
- ▶ Initiative Games
- ▶ Rope Maze
- ▶ Boot Camp Commando Course
- ▶ Bush Cooking & Covered Campfire Area seating 70
- ▶ Archery, Beach Volleyball, Table Tennis, Bocce, Soccer, Football
- ▶ On-Site Playing Fields/Soccer Pitch
- ▶ 4WD Tours
- ▶ Walhalla Goldfields Railway
- ▶ Long Tunnel Goldmine Tours
- ▶ Gold Panning & Ghost Tours
- ▶ Winter Snow Play, Snowboard & Skiing at Mount Baw Baw and Mount St. Gwinear
- ▶ Summer Swimming
- ▶ Talks from DSE, CFA, SES, Parks Victoria, Gippsland Water
- ▶ Guided Overnight Campouts
- ▶ Farm Visits
- ▶ Bush Dances

Rawson Village is located adjacent to State and National Parks, and set on 15 acres of native gardens.

We provide coordinated outdoor education programs designed to give students a variety of outdoor experiences, and to build skills of responsibility, leadership, and teamwork.

Our programs guarantee some challenging moments as well as lots of laughter and excitement - making it something your students will remember forever!

Snapshot of Rawson Village

- 15 acre fully fenced site
- 300 beds, including 150+ with ensuite bathrooms
- 20 Motel Rooms for teachers
- 3+ Recreation/Meeting Rooms
- 300 seat Dining Room
- Fully qualified chefs
- Fully accessible
- 'In house' activities programming & instructors
- References available
- Owner Operators, Jason and Tess Galante

Tennis Courts, Squash Courts, Basketball Stadium, Heated Swimming Pool, and Football/Cricket Oval are located just 200m from Rawson Village.



Rawson Village will provide an all inclusive package for your school.

Working in partnership with you, individual activity programs are designed which support your preferred learning outcomes, and promote growth through experience for your students.

Rawson Village ensures all safety procedures and guidelines are in accordance with the Education Department; your students' safety is our number one priority. All activities are facilitated by fully trained and qualified 'in house' instructors.

Our experienced staff will arrange everything, including transport to and from all activity locations. Also included is the provision of all specialized activity and safety equipment.

Rawson Village also provides quality accommodation and catering, full conferencing facilities, and business services for teachers.



Testimonial

Mazenod College has held its Year 7 Orientation camps at Rawson Village since 2009. Previously we had used a variety of smaller camps which we found unsatisfactory for the basic goal of having a new students get to know their teachers and each other by spending some time 'living' in community. We searched for a place in a beautiful environment which might cater for larger numbers. Rawson Village satisfied our criteria.

Each year we conduct two camps over the course of the week with half of our Year seven cohort attending each with an 'overlap' day on the Wednesday. In all we have approximately 250 people catered for during our week long stay.

Our decision to move the camps to Rawson Village has proved to be an outstanding success. The programs offered by the owners and their staff - tailored to suit our needs - are varied and popular with our students. The facilities at Rawson are far more suited to our purpose than we had previously enjoyed. The catering at Rawson Village is admirable and the attention to the wide range of dietary needs required in the modern age is top class. Over the years we have had several of our disabled students attend camp and every accommodation possible has been made for their inclusion in the camp experience.

Possibly the greatest advantage offered by Rawson Village for us is the quality and spirit of co-operation on the part of the owners and staff in the successful operation of our camps. We have had reliable experts in charge of the all the adventure activities, pleasant and helpful kitchen and maintenance staff as well as wonderful office support in the planning phase for each year. We find that Rawson Village is sensitive to the Catholic ethos which Mazenod seeks to bring to its camps program.

We are delighted with Rawson Village. Jason and Tess should be very proud of what they have on offer.

Matthew Johnson

Mazenod College Outdoor Education Co-ordinator

General Information

Accreditation

Rawson Village is accredited by the Australian Tourism Accreditation Program (ATAP) under the National Tourism Accreditation Framework (NTAF).

Program Assistance

A program of activities can be designed to meet your needs, and we are more than happy to discuss your ideas, provide quotes, and make bookings on your groups' behalf.

Please don't hesitate to contact for a program tailored specifically to your requirements.

Sample Programs

Please refer to the following pages for sample programs. Please note that these samples are a guide only, and we are happy to design tailor-made programs for every school.

Transport

Rawson Village has access to a range of competitive coach and minibus pricing, for both local transport while on camp, and transfers to and from your school.

If you would like assistance with booking your transport we are able to supply quotations specific to your school upon request.

Note that if going to the snow you will need to book a coach with a hazardous conditions licence. We can also assist with this.



Sample Program 2 Nights

Day 1

9.00am Depart school - Packed morning tea on the way
12.30pm Arrive Rawson - Packed lunch 12.30 - 1.00
1.00 - 1.30pm Room allocation and Settle in
1.30 - 3.30pm Elective sessions
 Option 1 - Swimming
 Option 2 - Mushroom Rocks / Thompson Dam
4.00 - 5.00pm Annual inter house soccer match
5.00 - 6.00pm Bush Dance (Bells Stadium)
6.00 - 7.00pm Dinner
7.30-9pm Group 3 & 4 - Trivia
8.15-9.45pm Group 1 & 2 - Ghost Tour
9.00 - 9.30pm Supper

Day 2

Group 1	Group 2	Group 3	Group 4
8.35 - 8.37 Bus RV - KS 8.45 - 10.30 Bushwalk KS - TR	8.05 - 8.15 Bus RV - TR 8.30 - 10.15 Canoeing	8.45 - 10.30 4WD RV - Wal	9.00 - 9.20 Bus RV - Wal 9.30 - 10.20 Mine
10.30 - 12.15 Canoeing 12.15 - 12.25 Bus TR - RV	10.15 - 12.00 Bushwalk TR - KS 12.00 - 12.02 Bus KS - RV	10.30 - 11.20 Mine 11.20 - 11.40 Bus Wal - RV	10.30 - 12.15 4WD Wal - RV
12.30 Lunch at RV	Pick Up Packed Lunch	12.30 Lunch at RV	12.30 Lunch at RV
1.15 - 3.00 4WD RV - Wal	12.30 - 12.50 Bus RV - Wal Lunch in Wal 1.30 - 2.30 Mine	1.10 - 2.45 Bushwalk KS - TR	1.15 - 1.25 Bus RV - TR 1.30 - 3.15 Canoeing
3.00 - 3.50 Mine 4.00 - 4.20 Bus Wal - RV	3.00 - 4.45 4WD Wal - RV	3.15 - 5.00 Canoeing 5.15 - 5.25 Bus TR - RV	3.15 - 5.00 Bushwalk TR - KS 5.00 - 5.02 Bus KS - RV

5pm-6pm Free time
6pm-7pm Dinner
7.30-9pm Group 1 & 2 - Trivia/Campfire with Marshmallow Toasting
 (weather permitting).
8.15pm-9.45pm Group 3 & 4 - Ghost Tour
9pm-9.30pm Supper

Day 3

8am-12pm Rotate in 4 groups through Mountain Biking, Archery/Beach
 Volley-ball Tournament
12pm-12.30pm Lunch
12.30-12.45pm Pack buses
12.45pm Depart Rawson

Activities in this program:

Swimming
 Bushwalk at Mushroom Rocks
 and to Thomson River
 Visit to Thomson Reservoir
 Soccer
 Bush Dance
 Ghost Tour
 Canoeing
 Long Tunnel Mine Tour
 4WD Tour
 Campfire with Marshmallow
 Toasting
 Mountain Biking
 Archery
 Beach Volleyball



Ensuite Lodge Accommodation

Sleeps
114+

Silvan Ensuite Lodges & Cardinia Ensuite Lodges

Silvan & Cardinia Ensuite Lodges comprise a total of 20 bedrooms, each with their own attached ensuite bathroom.

There are 114+ beds in this area under the standard bedding configuration. Extra beds can be added.

18 rooms contain 3 sets of bunks, while 2 rooms are specifically designed for disabled access with 3 single beds, and fully accessible bathrooms (see photo)

All rooms have floor heating.

Attached to the Ensuite Lodges is a large Recreation/Function Room seating up to 300 people.

The Function Room can also be divided into two separate rooms with the closure of an internal wall (internal access still available).

Audiovisual equipment, whiteboards, projectors and screens, microphone & amplifier, and sporting equipment are all available at no extra charge.

Beds are provided with blankets and pillows. Guests are asked to provide their own bed-linen (or sleeping bag), pillowcase, and towels. Linen and towels can be hired if required.

Your school will have exclusive use of your accommodation areas.



Lodge Accommodation

Donnelly Lodge

&

Coranderrk Lodge

These self-contained Lodges provide primarily private twin-share bedrooms, with some larger family rooms available.

Each Lodge contains 38 beds, for a total of 76 available beds.

Shared bathroom facilities (separate male & female areas) are all under the one roof within the lodge buildings. Donnelly Lodge has a fully accessible bathroom, recently refurbished, and access ramps.

Both Lodges have a small lounge area, equipped with TV & DVD. There is also a campfire and BBQ area within the quadrangle of each of the lodges.

The Conference Room or Meeting Room are available to schools staying in Lodge accommodation.

Audiovisual equipment, whiteboards, projectors and screens, microphone and amplifier, and sporting equipment are all available at no extra charge.

Beds are provided with blankets and pillows. Guests are asked to provide their own bed-linen (or sleeping bag), pillowcase, and towels. Linen and towels can be hired if required.

Your school will have exclusive use of your accommodation areas.

Sleeps 38
 $\times 2 = 76$



Motel Accommodation

Sleeps

60+

Motel Rooms

Our motel accommodation comprises 20 rooms, all of which can be either shared or single.

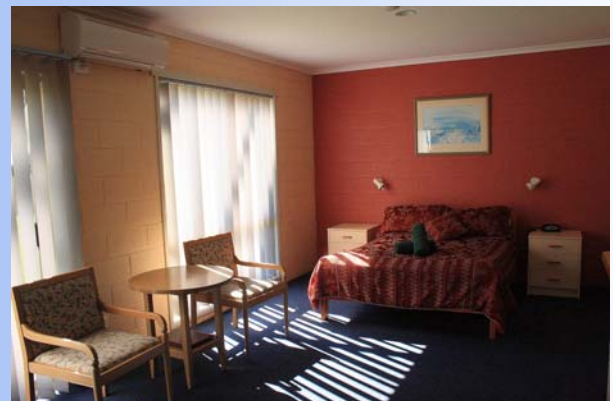
Teachers coming to camp are welcome to upgrade their accommodation.

Each Motel room is provided either with full linen & towels, or BYO, by arrangement.

All Motel rooms have their own private ensuite, colour TV and DVD player, radio, reverse cycle air conditioning, electric blankets, hairdryer, refrigerator, tea & coffee making facilities, telephone, and wireless internet access.

Groups staying in Motel rooms are welcome to arrange a catering package in our fully licensed Dining Room. There are a number of different catering packages available to suit every budget.

A meeting/recreation room can also be booked for your schools' exclusive use.



Patchworking in the Conference Room

Rawson Village hosts many creative groups, such as patchworking, scrapbooking, and other craft groups. Motel accommodation is available for these types of groups, plus others such as **4WD clubs, car clubs, photography clubs, Probus clubs, historical societies, conferences, and tour groups.**

Recreation Rooms

Function/Recreation Room ▶▶▶▶

Seats 300

Attached to the Ensuite Lodges is a large Recreation /Function Room seating up to 300 people.

The Function Room can be divided into two completely separate rooms with the closure of an internal wall (internal access still available). There are male and female toilets, plus a fully accessible bathroom.

Audiovisual equipment, whiteboards, projectors & screens, microphone & amplifier, and sporting equipment are available at no extra charge.



Conference Room ↓↓↓↓

Seats 80

The Conference Room seats up to 80 people theatre-style.

There are male/female toilets, plus a fully accessible bathroom, in the foyer area.

Audiovisual equipment, whiteboards, projectors and screens, microphone & amplifier, and sporting equipment are all available at no extra charge.



Meeting Room



Seats 30

The Meeting Room seats 10-30 people, and has a slow combustion fireplace, gas heating, kitchenette, and male/female toilets in the foyer area.

Audiovisual equipment, whiteboards, projectors and screens, microphone & amplifier, and sporting equipment are all available at no extra charge.



Catering & Dining

**No Duty Groups
Required.**

**WE DO IT ALL
FOR YOU!**



Your breakfasts, lunches and set 2 course dinners will be served in the Dining Room, while morning tea, afternoon tea and supper will be delivered to your recreation room. Packed lunches are provided for field trips.

The Dining Room is air-conditioned during summer, and heated with open fires in winter.

**All meals are prepared on-site
by fully qualified chefs.**

Special dietary requirements and food allergies are catered for. Medical/philosophical diets catered for include peanut/nut allergies, egg/seafood allergies, Halal meals, vegetarian/vegan, no pork, no beef, gluten free, lactose free, yeast free, and fructose/sucrose malabsorption.



Sample Menu

Breakfast

Cereals, fruit juice, toast & spreads, tea & coffee, and a hot selection (e.g. eggs, bacon & tomatoes, or pancakes, hashbrowns & sausages).

Morning Tea

Cake, fruit & either water or cordial.

Lunches

Pasta with Tomato & Oregano Sauce, served with salad.

Afternoon Tea

Cake, fruit & either water or cordial.

Set 2 Course Dinner

Beef Roast served with vegetables, and Chocolate Pudding with Icecream.

Supper

Biscuits.

Tea, coffee, milk and sugar are available in your recreation room at all times.

What To Bring to Camp

Please write your name and phone number on everything, including bags and day-packs.

- ▶ Sleeping Bag or 2 sheets, and a pillow-case
- ▶ Toiletries - including hairbrush, toothbrush, toothpaste, soap, shampoo, deodorant (roll on **NOT** spray on) etc
- ▶ Towel/s
- ▶ Socks and underwear - 2 pairs per day
- ▶ Pyjamas
- ▶ Tracksuit
- ▶ Woolen Jacket or Jumper for Colder Weather
- ▶ Long Sleeved Shirt/s
- ▶ Full length pants - 1 per day
- ▶ T-shirts - must cover waist
- ▶ Tissues or handkerchiefs
- ▶ Indoor shoes or slippers - a must
- ▶ Runners - old pair—may get wet
- ▶ Torch
- ▶ Drink Bottle
- ▶ Waterproof raincoat with a hood - a must
- ▶ Sunscreen SPF30+
- ▶ Reading material
- ▶ Bug Repellant
- ▶ Swimwear (seasonal)
- ▶ Sunsmart Hat - a must
- ▶ A beanie/cap
- ▶ Garbage Bag - For dirty, wet clothes.
- ▶ Writing materials
- ▶ Medications - if required (to be handed to Group Leader and clearly labeled with name and instructions/directions for use)
- ▶ Please leave at home: Electronic devices, aerosol cans, chewing gum and money

OPTIONAL

- ▶ Camera
- ▶ Board / card games

Please remember to label EVERYTHING.

Remember that what you bring to camp is your responsibility.

The Camp Site Rules

Dining Room

- ▶ NO running inside the building.
- ▶ Tables, chairs and any other equipment used outside the dining room are to be replaced immediately after the alternative use.
- ▶ Guests are asked to line up in an orderly fashion to receive their meals.
- ▶ Ball games and other vigorous activities are to be played outside or under supervision in the Activities area.
- ▶ Drinks and food are to be consumed while seated at tables.
- ▶ Students are NOT to be in the kitchen.
- ▶ Second helpings will only be given once everybody has received their first.
- ▶ Guests are asked to scrape food scraps into the bin provided, returning crockery to the scullery servery and placing cutlery in the dish provided.

Other Rooms

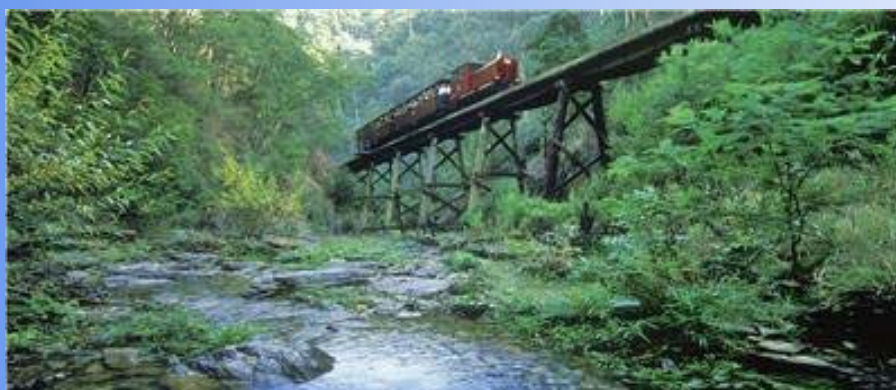
- ▶ Familiarise yourself with the buildings and note where the exits are near your room.
- ▶ NO shoes are to be worn inside; socks & slippers or indoor only shoes.
- ▶ NO food or drink in the rooms.
- ▶ NO running inside the building.
- ▶ Bedding is not to be removed from rooms.
- ▶ Fly wire screens are NOT to be removed or tampered with.
- ▶ When rooms are not being used all lights, fans and heaters are to be turned off.
- ▶ Power cabinets are not to be opened.
- ▶ The immediate areas around the accommodation are passive recreation areas - NO ball games, running etc.
- ▶ Before breakfast on the last morning students are to:
- ▶ Pack their bags, clean all rubbish from the floor and shelving, and check under beds and in drawers/wardrobes for personal items and rubbish.

The Camp Site Rules

- ▶ Rawson Village is to be maintained in a clean condition by the guests.
- ▶ Emergency procedure notices are posted throughout Rawson Village and guests should make themselves familiar with the arrangements.
- ▶ Extinguishers, fire hoses and smoke detectors are vital and are located around the site. THESE MUST NOT BE TAMPERED WITH OR REMOVED.
- ▶ No fire or BBQ may be lit on the property without the consent of Rawson Village Management. Fire restriction notices and Total Fire Ban Days MUST be strictly observed.
- ▶ All breakages and losses to Rawson Village property or equipment are to be reported to Rawson Village management.
- ▶ Rawson Village takes no responsibility for the loss or damage to personal property.
- ▶ Guests are only permitted to access the building to which they have been allocated.
- ▶ Guests are asked to respect the flora and fauna found in and around the area. National Park rules apply.
- ▶ All paddocks, gates, workshops, sheds, residences and surrounding property and creek are "out of bounds". Other areas including work sites, specialized activities (ropes courses, flying fox, obstacle & initiative courses) are "out of bounds" as directed by Rawson Village management. These activities can only be accessed with the prior approval of Rawson Village management and under adult supervision.
- ▶ A public, coin operated telephone is located within the main reception/dining room building. In an emergency guests can be contacted via Rawson Village reception on (03) 5165 3200.
- ▶ Care and commonsense should be taken in all buildings
- ▶ All noise should cease by 11pm.

The staff at Rawson Village take pride in presenting the facilities and grounds in an aesthetic, clean, safe and hygienic manner and we welcome your feedback for further improvements.

PLEASE HELP US MAKE YOUR CAMP A FUN AND MEMORABLE ONE!



Rawson Village

Gippsland • Victoria • Australia

Snapshot of Rawson Village

Owner Operators, Jason and Tess Galante

15 acre fully fenced site

300 beds, including 150+ with ensuite bathrooms

20 Motel Rooms for teachers

3+ Recreation/Meeting Rooms

300 seat Dining Room

Fully qualified chefs

Fully accessible

'In house' activities programming & instructors

References available

Wireless Internet



Where is Rawson?

Rawson is centrally located in West Gippsland approximately 1.5 - 2 hours drive from Melbourne airport.

Rawson Village is just 15 minutes from the historic gold mining town of **Walhalla**, 35 minutes from the snow fields of **Mt Baw Baw**, and 25 minutes from the snowfields of **Mt St Gwinear**.



Rawson Village, Pinnacle Drive, Rawson, Victoria, Australia 3825

Telephone: +61 3 5165 3200 Fax: +61 3 5165 3377

www.rawsonvillage.com Email: sales@rawsonvillage.com