



BACKSAFE
australia



1300 305 314

THE STURGO LIFT RANGE

2013



Please contact us for more customised product information:  1300 305 314 ■ www.backsafe-australia.com.au



BACKSAFE
australia



1 300 305 314

COMPACT ELECTRIC PALLET TRUCK



WHY?

- Agile enough to manoeuvre around the smallest warehouse.
- Prevent costly accidents from manually lifting, lowering and carrying.
- Save time and manpower with the powerful 1.5 metric tonne capacity.
- Simplified design to provide everything you need and nothing you don't.
- Good for the environment with no nasty fuel emissions.
- Quieter than combustion powered forklifts.



KEY FEATURES

- Compact body for easy storage.
- No unnecessary 'gimmicks'.
- Stylish semi-enclosed design.
- Powerful performance.
- Tough long-lasting engineering.
- Solid body frame.
- Ergonomically designed handle.
- Long-life battery.
- No hassle maintenance.
- Affordable price and excellent investment.

TECHNICAL BRIEF

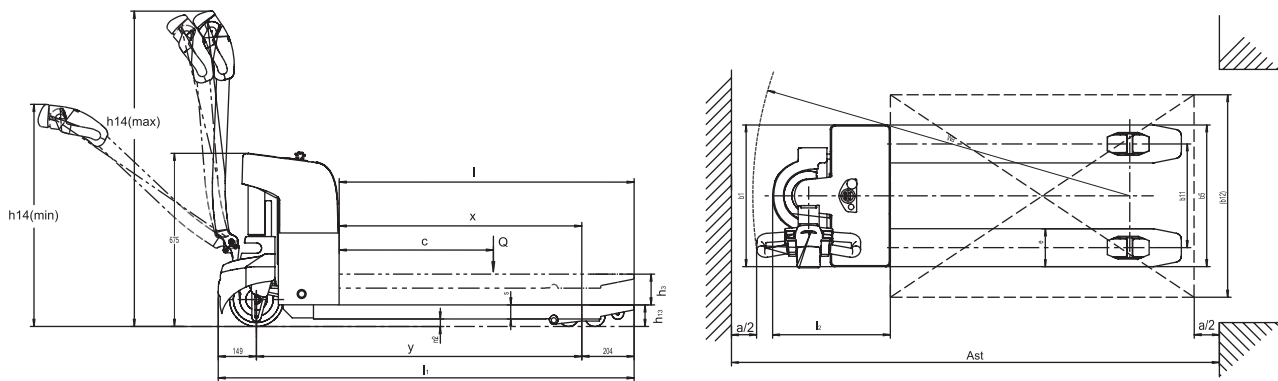
- Capacity 1500kg.
- Battery voltage/rated capacity 60AH.
- Electro-magnetic brake.

Please contact us for more customised product information:  1300 305 314 ■ www.backsafe-australia.com.au

THE STURGO LIFT RANGE

TAKING 'HARD
OUT OF HARDWORK

COMPACT ELECTRIC PALLET TRUCK



Characteristics			
1.2	Model designation		11740001
1.3	Drive unit		Battery
1.4	Operator type		Walkie
1.5	Load capacity	Q (kg)	1500
1.6	Load center	c (mm)	600
1.8	Load distance (raised/lowered)	x (mm)	883 / 946
1.9	Wheelbase	y (mm)	1250
Weights			
2.1	Service weight (incl. battery)	kg	205
2.2	Axle loading, laden operator / load side	kg	565 / 11140
2.3	Axle loading, unladen operator / load side	kg	25 / 180
Wheels, Chassis			
3.1	Tyre type		PU/PU
3.2	Tyre size, operator side		Φ 210 x 70
3.3	Tyre size, load side		2xΦ 85 x 60
3.5	Wheels, number operator / load side (x = drive wheels)		1x/4
3.7	Tread, load side	b ₁₁ (mm)	380
Dimensions			
4.4	Lift height	h ₃ (mm)	115
4.9	Height of tiller arm in operating position, min / max	h ₁₄ (mm)	820 / 1170
4.15	Fork height, lowered	h ₁₃ (mm)	85
4.19	Overall length	l ₁ (mm)	1600
4.20	Length to face of forks	l ₂ (mm)	450
4.21	Overall width	b ₁ / b ₂ (mm)	560
4.22	Fork dimensions	s/e/l (mm)	55 / 150 / 1150
4.25	Fork spread, min / max	b ₅ (mm)	560
4.32	Ground clearance, center of wheelbase	m ₂ (mm)	35
4.33	Aisle width, 1000 x 1200 pallet crossways	Ast (mm)	1779
4.34	Aisle width, 800 x 1200 pallet length ways	Ast (mm)	1929
4.35	Outer turning radius	Wa (mm)	1475
Performance			
5.1	Travel speed, laden / unladen	km/h	3.5 / 4
5.2	Lifting speed, laden / unladen	m/s	0.051 / 0.060
5.3	Lowering speed, laden / unladen	m/s	0.052 / 0.059
5.8	Maximum gradeability, laden / unladen S≥5 min.	%	2/6
5.10	Service brake		Electromagnetic
Drive			
6.1	Drive motor rating S≥60 min.	kW	0.65
6.2	Lift motor rating at S≥15%	kW	0.84
6.4	Battery voltage / rated capacity (5h)	V/Ah	24 / 60
6.5	Battery weight	kg	22.5 x 2
	Battery compartment dimensions l/w/h	mm	260 / 168 / 218
	Battery type		Maintenance free battery
Others			
8.1	Type of drive control		DC
	Manufacturer		CURTIS
8.4	Sound level at operator's ear	dB(A)	74

1. The specification in the table are for standard models only. For further information please contact us.
2. Specification are subject to change without notice.



BACKSAFE
australia



1300 305 314

HEAVY DUTY ELECTRIC PALLET TRUCK



KEY FEATURES

- Compact body for easy storage.
- Stylish design with powerful performance.
- Tough long-lasting engineering.
- Solid body frame.
- Ergonomically designed handle.
- Long-life battery.
- No hassle maintenance.
- Affordable price and excellent investment.
- Floor length chassis covers wheels for safety.
- Locked battery tray to prevent movement.
- Slide-in key and power meter.
- Tapered fork design.
- Ball bearing steering system.
- Long arm steering handle with controlled return.
- Easy release casters through chassis apron.
- Easily replaced operation switches in tiller head.
- Diagnostic handset.
- Bushes on all pivot points.
- Optional grease fittings on all lift linkage and steering points.
- Hydraulic reservoir cap for easy top-up.
- Wide-angle hinged battery cover.
- Key components access through easy-open top cover.

WHY?

- Agile enough to manoeuvre around the smallest warehouse.
- Prevent costly accidents from manually lifting, lowering and carrying.
- Save time and manpower with the powerful 2 metric tonne capacity.
- Good for the environment with no nasty fuel emissions.
- Quieter than combustion powered forklifts so ideal for warehouses which echo.
 - Finish jobs faster with responsive acceleration from the powerful AC drive system.
 - Essential safety features designed to protect your team.
- Maintain constant travel speeds to prevent accidents - especially on slopes.
- Easy to operate with lifting and lowering buttons at operator's fingertips.
- Effortlessly manoeuvrable with gas-assisted springs for smooth operation.
- Ideal for tight areas with creep speed control and near vertical handle to save nearly 30 per cent of manoeuvring space.
- Prevent motor overload and save energy with the external cut-off switch and mechanical stop.
- Tough one-piece overall design provides safe stability and strength while loading.
- Quality engineering ensures low noise and less vibration.
- Critical safety features including easy-touch emergency plug for complete operator control.

TECHNICAL BRIEF

- Capacity 2000kg
- Tandem Load Wheel
- Travel speed: 5.5km
- Fork Size 1150 x 540
- Built in Charger
- Electric park brake

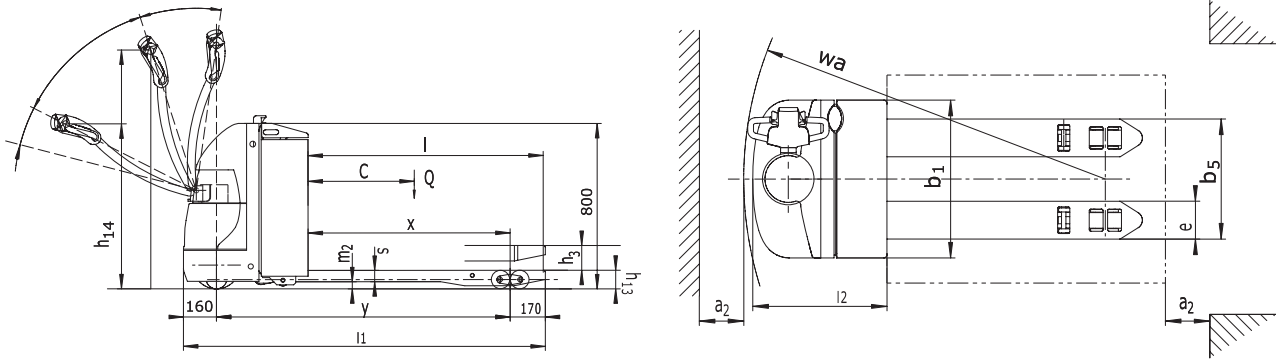


Please contact us for more customised product information:  1300 305 314 ■ www.backsafe-australia.com.au

THE STURGO LIFT RANGE



HEAVY DUTY ELECTRIC PALLET TRUCK



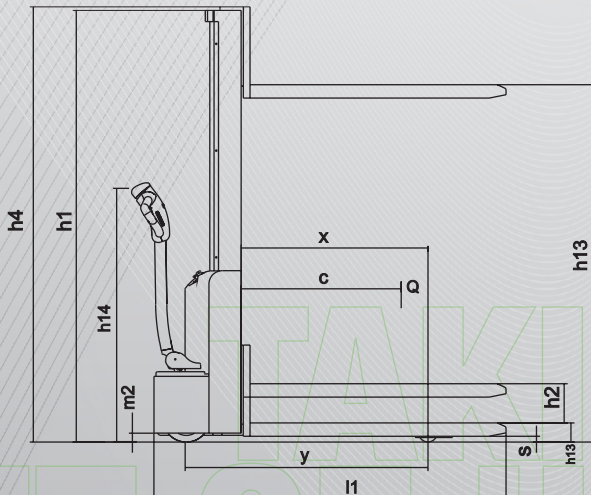
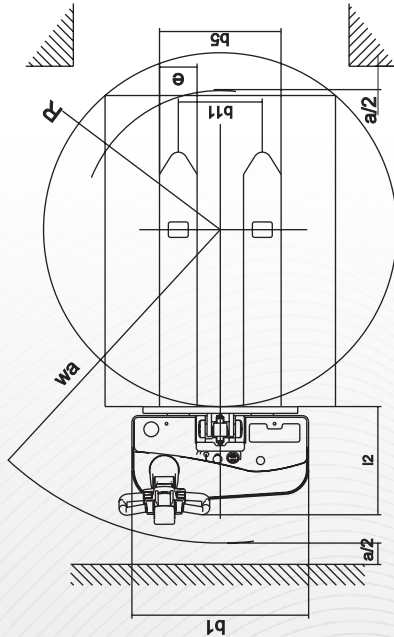
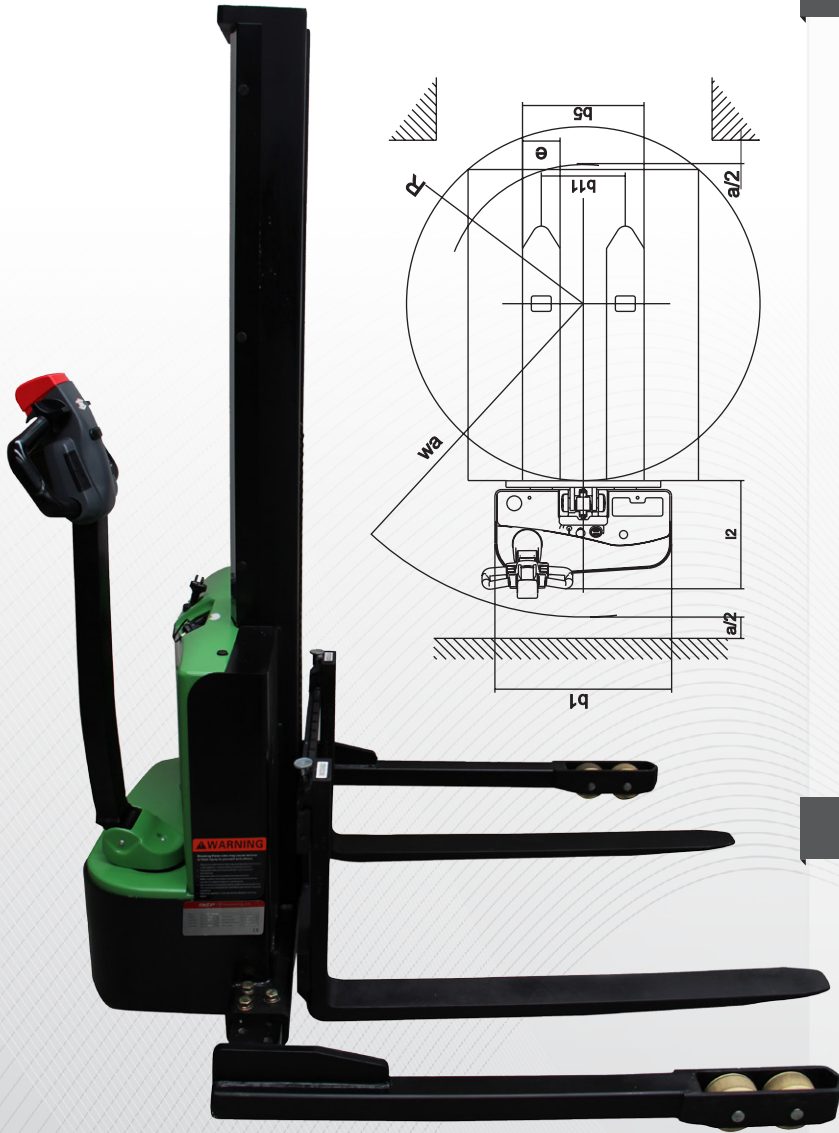
Characteristics			
1.2	Model designation		11740003
1.3	Drive unit		Battery
1.4	Operator type		Walkie
1.5	Load capacity	Q (kg)	2000
1.6	Load center	c (mm)	600
1.8	Load distance (raised/lowered)	x (mm)	916 / 982 937 / 1003
1.9	Wheelbase	y (mm)	1418 1438
Weights			
2.1	Service weight (incl.battery)	kg	535
2.2	Axle loading, laden operator / load side	kg	955 / 1580
2.3	Axle loading, unladen operator / load side	kg	430 / 105
Wheels, Chassis			
3.1	Tyre type		PU/PU
3.2	Tyre size, operator side		Φ 230 x 75
3.3	Tyre size, load side		2x Φ 85 x 70 / Φ 85 x 115
3.4	Balance wheels (dimensions)		Φ 85 x 48
3.5	Wheels, number operator / load side (x = drive wheels)		1x +2/2 or 4
3.6	Tread, operator side	b ₁₀ (mm)	498
3.7	Tread, load side	b ₁₁ (mm)	370/515
Dimensions			
4.4	Lift height	h ₃ (mm)	125
4.9	Height of tiller arm in operating position, min / max	h ₁₄ (mm)	825/1190
4.15	Fork height, lowered	h ₁₃ (mm)	85
4.19	Overall length	l ₁ (mm)	1748 1818
4.20	Length to face of forks	l ₂ (mm)	598
4.21	Overall width	b ₁ / b ₂ (mm)	710
4.22	Fork dimensions	s/e/l (mm)	55x170x1150 55x170x1220
4.25	Fork spread, min / max	b ₅ (mm)	540
4.32	Ground clearance, center of wheelbase	m ₂ (mm)	35
4.33	Aisle width, 1000 x 1200 pallet crossways	Ast (mm)	1856
4.34	Aisle width, 800 x 1200 pallet length ways	Ast (mm)	2058
4.35	Outer turning radius	Wa (mm)	1638 1659
Performance			
5.1	Travel speed, laden / unladen	km/h	5 / 5.5
5.2	Lifting speed, laden / unladen	m/s	0.051 / 0.060
5.3	Lowering speed, laden / unladen	m/s	0.052 / 0.059
5.8	Maximum gradeability, laden / unladen S ₂ 5 min.	%	8 / 16
5.10	Service brake		Electromagnetic
Drive			
6.1	Drive motor rating S ₂ 60 min.	kW	1.1
6.2	Lift motor rating at S ₃ 15%	kW	0.84
6.4	Battery voltage / rated capacity (5h)	V/Ah	24 / 160
6.5	Battery weight	kg	160
	Battery compartment dimensions l/w/h	mm	650 / 540 / 200
	Battery type		Industry battery
Others			
8.1	Type of drive control		AC
	Manufacturer		ZAPI
8.4	Sound level at operator's ear	dB(A)	74

1. The specification in the table are for standard models only. For further information please contact us.
2. Specification are subject to change without notice.

Please contact us for more customised product information: [1300 305 314](tel:1300305314) ■ www.backsafe-australia.com.au



COMPACT ELECTRIC STRADDLE STACKER



WHY?

- Agile enough to manoeuvre around the smallest warehouse.
- Prevent costly accidents from manually lifting, lowering and carrying.
- Save time and manpower with the powerful 1 metric tonne capacity.
- Good for the environment with no nasty fuel emissions.
- Quieter than combustion powered forklifts so ideal for warehouses which echo.
- Automatically adjusts rate of decline (loaded or unloaded) for safe operation.
- Quality engineering ensures low noise and less vibration.
- Effortlessly smooth lifting with a world-class hydraulic power pack.
- Critical safety features including easy-touch emergency plug for complete operator control.
- Simple to operate with ergonomically designed features and immediate responsiveness.

KEY FEATURES

- Compact body for easy storage.
- Stylish design with powerful performance.
- Tough long-lasting engineering.
- Powerful performance.
 - Solid body frame.
 - Ergonomically designed handle.
- Long-life battery.
- No hassle maintenance.
- Affordable price and excellent investment.
- Sideway battery for easy replacement.
- Side operating handle for better operator vision.
- Explosion proof valve under lifting cylinder.
- Controlled mast drop if oil pipe breaks.

TECHNICAL BRIEF

- Capacity 1000kg.
- Travel speed 4.2 to 5 km.
- Gel battery.
- Electromagnetic service brake.



COMPACT ELECTRIC STRADDLE STACKER

Characteristics			
1.2	Model designation		11740004
1.3	Drive unit		Electric
1.4	Operator type		Pedestrian
1.5	Load capacity	Q (kg)	1000
1.6	Load center	c (mm)	600
1.8	Load distance	x (mm)	850
1.9	Wheelbase	y (mm)	1210
Weights			
2.1	Service weight (incl.battery)	kg	625
2.2	Axle loading, laden operator / load side	kg	725 / 900
2.3	Axle loading, unladen operator / load side	kg	495 / 130
Wheels, Chassis			
3.1	Tyre type		PU/PU
3.2	Tyre size, operator side	mm	Φ 210 x 70
3.3	Tyre size, load side	mm	Φ 100 x 50
3.4	Balance wheels (dimensions)	mm	Φ 100 x 50
3.5	Wheels, number operator / load side (x = drive wheels)		1x + 1/4
3.6	Tread, operator side	b ₁₀ (mm)	533
3.7	Tread, load side	b ₁₁ (mm)	1060 / 1160 / 1260 / 1360
Dimensions			
4.2	Height, mast lowered	h ₁ (mm)	1940
4.3	Free lift	h ₂ (mm)	1500
4.4	Lift height	h ₃ (mm)	1600
4.5	Height, mast extended	h ₄ (mm)	2045
4.9	Height of tiller arm in operating position, min / max	h ₁₄ (mm)	860 / 1200
4.15	Fork height, lowered	h ₁₃ (mm)	50
4.19	Overall length	l ₁ (mm)	1570
4.20	Length to face of forks	l ₂ (mm)	500
4.21	Overall width	b ₁ / b ₂ (mm)	1135 / 1235 / 1335 / 1435
4.22	Fork dimensions	s/e/l (mm)	35 / 100 / 1070
4.25	Outside fork width, minimum / maximum	b ₅ (mm)	200 / 700
4.32	Ground clearance	m ₂ (mm)	40
4.33	Aisle width, 1000 x 1200 pallet crossways	Ast (mm)	2175
4.34	Aisle width, 800 x 1200 pallet length ways	Ast (mm)	2100
4.35	Outer turning radius	Wa (mm)	1329
Performance			
5.1	Travel speed, laden / unladen	km/h	3.5 / 4
5.2	Lifting speed, laden / unladen	m/s	0.12 / 0.22
5.3	Lowering speed, laden / unladen	m/s	0.12 / 0.11
5.8	Maximum gradeability, laden / unladen S ₂ 5 min.	%	3 / 10
5.10	Service brake		Electromagnetic
Drive			
6.1	Drive motor rating S ₂ 60 min.	kW	0.65
6.2	Lift motor rating at S ₃ 15%	kW	2.2
6.4	Battery voltage / rated capacity (5h)	V/Ah	2x 12 / 80
6.5	Battery weight (with box)	kg	2 x 20
	Battery compartment dimensions l/w/h	mm	260 / 172 / 215
	Battery type		Gel Battery
Others			
8.1	Type of drive control		DC
	Manufacturer		CURTIS
8.4	Sound level at operator's ear	dB(A)	74

1. Special lifting height available
2. The specification in the table are for standard models only. For further information please contact us.
3. Specification are subject to change without notice.



BACKSAFE
australia



1300 305 314

HIGH FREQUENCY ELECTRIC STRADDLE STACKER



WHY?

- Agile enough to manoeuvre around the smallest warehouse.
- Prevent costly accidents from manually lifting, lowering and carrying.
- Save time and manpower with the powerful 1 metric tonne capacity.
- Good for the environment with no nasty fuel emissions.
- Quieter than combustion powered forklifts so ideal for warehouses which echo.
- Operate safely on ramps and prevent uncontrolled roll backs with the anti-roll system.
- Effortlessly smooth lifting with a world-class hydraulic power pack.
- Automatically adjusts rate of decline (loaded or unloaded) for safe operation.
- Quality engineering ensures low noise and less vibration.
- Simple to operate with ergonomically designed features and immediate responsiveness.
- Critical safety features including easy-touch emergency plug for complete operator control.
- Intuitive speed control switches to low-speed when lifting higher than 0.5 meters.

KEY FEATURES

- Compact body for easy storage.
- Stylish design with powerful performance.
- Tough long-lasting engineering.
- Solid body frame.
- Ergonomically designed handle.
- Long-life battery.
- No hassle maintenance.
- Affordable price and excellent investment.
- Sideway battery for easy replacement.
- Side operating handle for better operator vision.
- Explosion proof valve under lifting cylinder.
- Controlled mast drop if oil pipe breaks.

TECHNICAL BRIEF

- Capacity 1000kg
- Lift height 3000mm
- Travel speed 3.5 to 4km
- Built in charger
- Electric park brake



Please contact us for more customised product information:  1300 305 314 ■ www.backsafe-australia.com.au

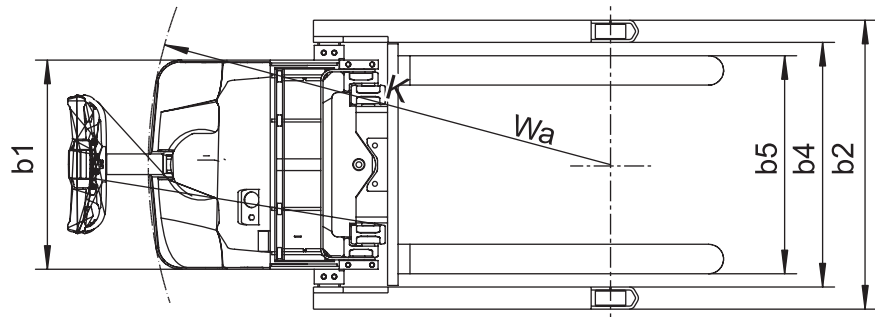
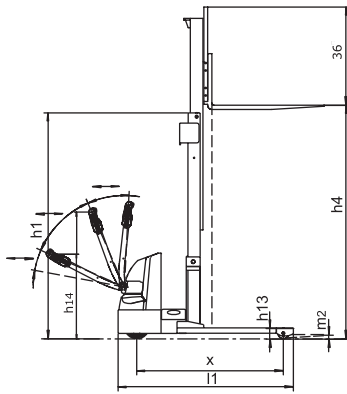
THE STURGO LIFT RANGE

HIGH FREQUENCY ELECTRIC
STRADDLE STACKER

OUT OF THE BOX



HIGH FREQUENCY ELECTRIC STRADDLE STACKER



Characteristics			
1.2	Model designation		11740006
1.3	Drive unit		Battery
1.4	Operator type		Walkie
1.5	Load capacity	Q (kg)	910
1.6	Load center	c (mm)	600
1.9	Wheelbase	y (mm)	1374
Weights			
2.1	Service weight (incl. battery)	kg	960
Wheels, Chassis			
3.1	Tyre type		PU/PU
3.2	Tyre size, operator side (diameter x width)	mm	Φ 230 x 75
3.3	Tyre size, load side (diameter x width)	mm	Φ 102 x 50
3.5	Wheels, number operator / load side (x = drive wheels)		1x / 2
3.7	Tread, load side	b ₁₁ (mm)	1045/1345
Dimensions			
4.2	Height, mast lowered	h ₁ (mm)	2110
4.3	Free lift	h ₂ (mm)	150
4.4	Lift height	h ₃ (mm)	3300
4.5	Height, mast extended	h ₄ (mm)	4196
4.9	Height of tiller arm in operating position, min / max	h ₁₄ (mm)	825/1190
4.10	Height of straddle arms or load wheel casing	h ₈ (mm)	100
4.15	Fork height, lowered	h ₁₃ (mm)	75
4.19	Overall length	l ₁ (mm)	1948
4.20	Length to face of forks	l ₂ (mm)	877
4.21	Overall width	b ₁ / b ₂ (mm)	1120 / 1420
4.22	Fork dimensions	s/e/l (mm)	40 / 100 / 1070
4.24	Fork carriage width	b ₃ (mm)	820
4.25	Outside fork width, min / max	b ₅ (mm)	254 / 780
4.26	Width between straddle arms	b ₄ (mm)	970 / 1270
4.32	Ground clearance, center of wheelbase	m ₂ (mm)	50
4.33	Aisle width, 1000 x 1200 pallet crossways	Ast (mm)	2157
4.34	Aisle width, 800 x 1200 pallet length ways	Ast (mm)	2197
4.35	Outer turning radius	Wa (mm)	1545
Performance			
5.1	Travel speed, laden / unladen	km/h	5.5 / 6.0
5.2	Lifting speed, laden / unladen	m/s	0.127 / 0.23
5.3	Lowering speed, laden / unladen	m/s	0.26 / 0.20
5.8	Maximum gradeability, laden / unladen S ₂ 5 min.	%	8/16
5.10	Service brake		Electromagnetic
Drive			
6.1	Drive motor rating S ₂ 60 min.	kW	1.1
6.2	Lift motor rating at S ₃ 15%	kW	2.2
6.4	Battery voltage / rated capacity (5h)	V/Ah	24 / 160
6.5	Battery weight (with box)	kg	160
	Battery compartment dimensions l/w/h	mm	-
	Battery type		-
Others			
8.1	Type of drive control		AC
	Manufacturer		ZAPI
8.4	Sound level at operator's ear	dB(A)	74

1. Special lifting height available
2. The specification in the table are for standard models only. For further information please contact us.
3. Specification are subject to change without notice.

Please contact us for more customised product information: [1300 305 314](tel:1300305314) ■ www.backsafe-australia.com.au