



## Partial renovation gives practice new life

A decade and a half after establishing his practice in a landmark former church in Rockingham, near Perth, Dr Michael Sturgeon decided some renovations were required. Rather than move from the beautiful surrounds or close for some months, a partial renovation of the public areas of the practice was decided upon. The renovation would also coincide with a name change from Abbey Dental Group to All Saints Dental Group and include a new logo and fresh new look for the road ahead.

“We provide all aspects of general dentistry, including Laser and CEREC Dentistry,” Dr Sturgeon said. “Our focus is on delivering the best that dentistry has to offer, with exceptional service. We want our patients to feel comfortable and at ease whilst at our practice.

“With this in mind, at the end of 2006, we decided on a redirection for the prac-

tice. We had worked with Kathy Metaxas at Platinum Professional Development and decided that it was time to revamp our look and give our clients and staff new and updated surrounds.



“It had been a number of years since we had our office area updated. We’ve grown in size since starting as a one dentist/one therapist practice. We now have three dentists, a therapist and a hygienist, as well as

our clinical and front office support team. We were running out of space and the reception area and patient lounge were looking very tired and dated.

“After seeing Medifit’s advertisements in Australasian Dental Practice magazine, we contacted Sam Koranis, who was very approachable and came out to meet with us within a few days. Medifit’s experience and knowledge of the industry gave us complete faith in their ability to deliver. After meeting with the Medifit design team, we were presented with their fantastic concept. We were thrilled at first instance and ran with it!”

The former Church of St Nicholas that houses the practice was built in 1945 from limestone in the coastal community some 40 minutes south of Perth. The building is on the Rockingham Heritage List and thus provided a unique challenge.

The scope of the renovation included a consult room, practice manager's office, reception, waiting area and child friendly play area.

The general design philosophy was to create a modern yet peaceful and tranquil environment whilst maintaining a professional image that will appeal to a diverse age demographic.

One of the main design elements was the gabled ceiling ranging from 3 metres at the walls up to 5 metres at the centre making for a fantastic blank canvas full of possibilities. Keeping this in mind, a multi-tiered ceiling which creates a lot of interest and volume in the space was designed.

Natural light has been introduced and framed through the existing tall narrow windows by the omission of any window treatments whilst also retaining and uncovering original elements of the building.

Upon entry, clients are greeted by a staff member at the curved reception desk which is mounted off the floor to give a visually lighter effect. Placement of a tall, coloured, curved wall behind the counter acts as a focal point on which the new logo is located.

The materials and finishes selected are based on neutral tones along with the blue colours which set the backdrop for the relaxed, tranquil, by-the-sea feel. The use of sweeping curves on the floor and ceiling also acts to soften the environment and create a gentle flow of movement whilst utilizing the height of the ceiling.

A designated childrens' play room has been incorporated into the waiting area with partial glazing to allow parents to watch whilst relaxing in the quiet waiting area.

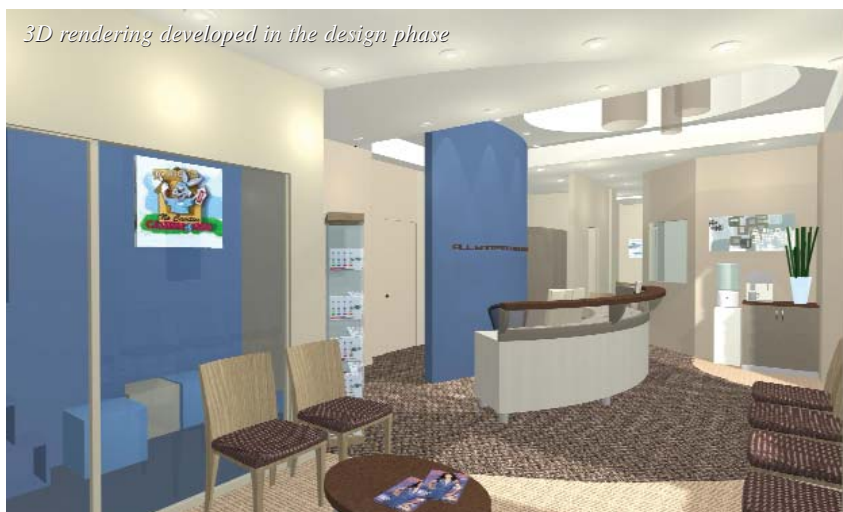
An area has been created off of reception specifically designed to house office equipment such as fax and photocopier including a compactus filing system with ample shelving for future expansion. A refreshment area has also been included with a built-in wine fridge.

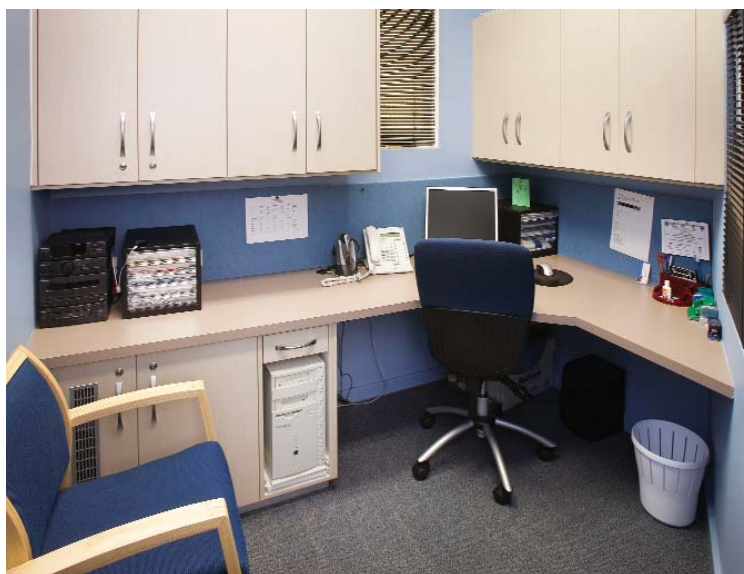
The practice manager's office was located near reception with a partially obscured glass window allowing the monitor of daily activity.

"Our main concern was that we would not cease practising during the renovations," Dr Sturgeon said. "Medifit was more than obliging in this area. We set-up a 'makeshift' reception area in our staff room. Sam and Mark Evangelisti and the



*3D rendering developed in the design phase*





team at Medifit were able to get us operational in the front office within 2 weeks, which was no small feat!

“There was plenty of guidance and assistance from Sam and Mark who made themselves available 7-days a week. Mark was prompt and efficient in dealing with all aspects of the project. No question or query was too big or too small.”

“Our biggest challenge was to complete this project in a two week period,” said Sam Koranis. “Careful planning, strong pro-

ject management, a seven day a week schedule and our trades providing their consistently obliging service worked the required times and ensured the project went smoothly.”

“We are very pleased with how it all turned out,” Dr Sturgeon said. “More importantly our patients love it! Thank you Sam, Mark and the Medifit team for all your hard work! We highly recommend Medifit to anyone looking for a quality service provided on a timely basis.”



## Summary

### The Practice

Principal	Dr Michael Sturgeon
Type of Practice	General
Location	Rockingham, Western Australia
Size	62 square metres renovated
No of chairs	Admin area only renovated

### The Team

Design	Medifit
Construction & Joinery	Medifit