

25 Tonne Crane



TOTAL RATED LOADS

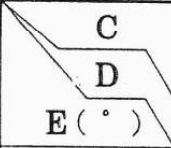
(1)

Unit:ton

· Outriggers fully extended + Front jack (360°) · Outriggers fully extended (Over the Rear · Over the Sides)							
A B (m)	10.5m	14.2m	18.0m	21.7m	25.5m	29.2m	33.0m
3.0	25.00	20.00	16.00				
3.5	25.00	20.00	16.00	12.00			
4.0	22.90	20.00	16.00	12.00	11.50		
4.5	21.00	20.00	16.00	12.00	11.50		
5.0	19.40	18.40	16.00	12.00	11.50	9.00	
5.5	17.70	16.80	14.75	12.00	11.50	9.00	7.00
6.0	16.20	15.30	13.70	12.00	11.50	9.00	7.00
7.0	13.70	12.65	11.95	11.00	10.00	9.00	7.00
8.0	11.40	10.65	10.55	10.20	8.90	8.20	7.00
9.0		8.85	8.75	9.20	8.05	7.45	6.25
10.0		7.20	7.10	7.50	7.30	6.75	5.70
12.0		5.00	4.90	5.25	5.60	5.65	4.80
14.0			3.50	3.85	4.15	4.30	4.10
16.0			2.50	2.85	3.15	3.30	3.40
18.0				2.15	2.40	2.55	2.65
20.0				1.60	1.85	2.00	2.10
22.0					1.40	1.55	1.65
24.0						1.20	1.30
26.0						0.90	1.00
28.0							0.75
30.0							0.50

A = Boom length B = Working radius

Unit:ton

· Outriggers fully extended + Front jack (360°) · Outriggers fully extended (Over the Rear · Over the Sides)						
 C D E (°)	8.7 m			14.5 m		
	5 °	2 5 °	4 5 °	5 °	2 5 °	4 5 °
80	3.00	1.70	1.00	2.00	0.90	0.60
77	3.00	1.70	1.00	2.00	0.90	0.60
76	3.00	1.70	1.00	1.85	0.90	0.60
75	3.00	1.67	0.96	1.74	0.87	0.57
70	2.20	1.44	0.86	1.35	0.80	0.53
65	1.75	1.25	0.80	1.10	0.72	0.49
60	1.40	1.10	0.75	0.90	0.64	0.46
55	1.10	0.95	0.70	0.73	0.56	0.43
50	0.70	0.65	0.60	0.55	0.45	0.40
46	0.45	0.45	0.40	0.35	0.30	0.25
45	0.40	0.40	0.35	0.30	0.25	
42	0.25	0.25				

C = Jib length D = Jib offset E = Boom angle

NOTES:

1. The total rated loads shown are for the case when the outriggers are set horizontally on firm ground. The values are based on the crane strength.
2. The weights of the slings and hooks (main winch hook: 280kg, auxiliary winch hook: 60kg) are included in the total rated loads shown.
3. The total rated load is based on the actual working radius including the deflection of the boom.
4. The chart below shows the standard number of part lines for each boom length. The load per line should not exceed 3.2t for the main winch and 3.4t for the auxiliary winch.

A	10.5m	14.2m	18.0m	21.7m	25.5m	29.2m	33.0m	J
H	8	7	7	4	4	4	4	1

A = Boom length H = No. of part-line J = Jib / Single top

5. As a rule, free-fall operations should be performed only when lowering the hook alone. If a hoisted load must be lowered by free-fall operation, the load must be kept below 1/5th of the total rated load (the load per line must be 0.7t or less) and sudden braking operations must be avoided.
6. The total rated loads for the single top are obtained by subtracting the corresponding values below from the total rated load of the boom and must not exceed 3.4t.

A	10.5m	14.2m	18.0m	21.7m	25.5m	29.2m	33.0m
Q	0kg	100kg	100kg	200kg	200kg	250kg	250kg

A = Boom length Q = Subtracted load

(2)

Unit:ton

· Outriggers middle extended (360°) · Outriggers fully extended (Over the Front)							
A \ B (m)	10.5 m	14.2 m	18.0 m	21.7 m	25.5 m	29.2 m	33.0 m
3.0	25.00	20.00	16.00				
3.5	23.00	20.00	16.00	12.00			
4.0	20.00	20.00	16.00	12.00	11.50		
4.5	17.40	17.20	16.00	12.00	11.50		
5.0	14.00	13.80	13.60	12.00	11.50	9.00	
5.5	11.65	11.45	11.30	11.70	11.50	9.00	7.00
6.0	9.85	9.70	9.60	10.00	10.40	9.00	7.00
6.5	8.45	8.30	8.20	8.60	9.00	9.00	7.00
7.0	7.35	7.20	7.10	7.50	7.85	8.05	7.00
7.5	6.40	6.30	6.20	6.60	6.95	7.15	7.00
8.0	5.65	5.55	5.45	5.85	6.15	6.35	6.50
9.0		4.35	4.25	4.65	4.95	5.10	5.25
10.0		3.40	3.30	3.70	3.95	4.10	4.35
12.0		2.00	1.95	2.30	2.55	2.80	2.90
14.0			1.05	1.40	1.65	1.85	2.00
15.0			0.70	1.05	1.35	1.50	1.65
16.0				0.80	1.05	1.20	1.35
17.0					0.75	0.95	1.10
18.0						0.75	0.90

Unit:ton

· Outriggers middle extended (360°) · Outriggers fully extended (Over the Front)						
C \ D \ E (°)	8.7 m			14.5 m		
	5°	25°	45°	5°	25°	45°
80	3.00	1.70	1.00	2.00	0.90	0.60
77	3.00	1.70	1.00	2.00	0.90	0.60
76	3.00	1.70	1.00	1.85	0.90	0.60
75	2.65	1.67	0.96	1.74	0.87	0.57
70	1.45	1.15	0.86	1.10	0.80	0.53
66	0.80	0.65	0.60	0.60	0.45	0.35
65	0.65	0.55	0.50	0.50		

A = Boom length B = Working radius C = Jib length D = Jib offset E = Boom angle

NOTES:

1. The total rated loads shown are for the case when the outriggers are set horizontally on firm ground. The values are based on the crane strength.
2. The weights of the slings and hooks (main winch hook: 280kg, auxiliary winch hook: 60kg) are included in the total rated loads shown.
3. The total rated load is based on the actual working radius including the deflection of the boom.
4. The chart below shows the standard number of part lines for each boom length. The load per line should not exceed 3.2t for the main winch and 3.4t for the auxiliary winch.

A	10.5m	14.2m	18.0m	21.7m	25.5m	29.2m	33.0m	J
H	8	7	7	4	4	4	4	1

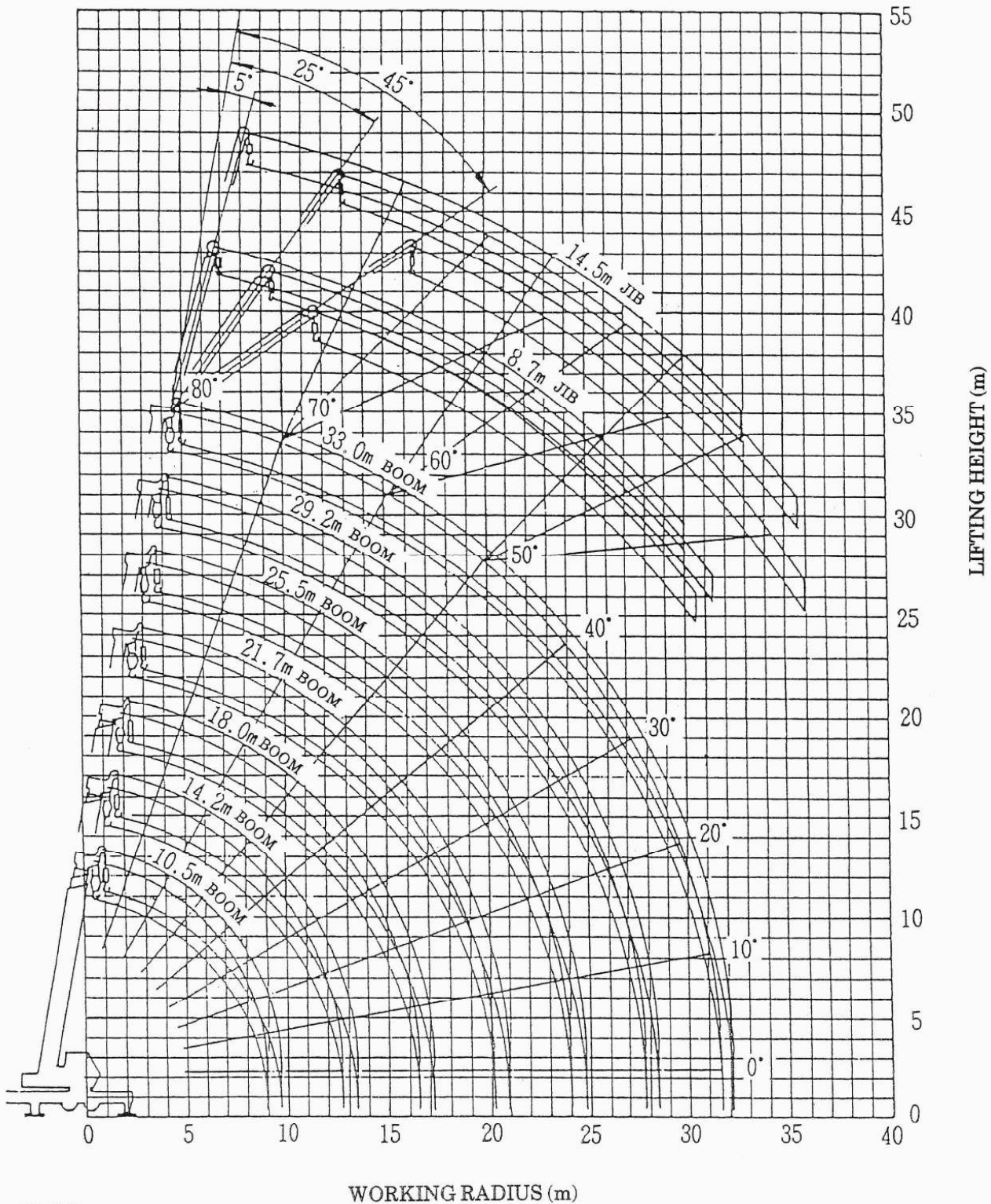
A = Boom length H = No. of part-line J = Jib / Single top

5. As a rule, free-fall operations should be performed only when lowering the hook alone. If a hoisted load must be lowered by free-fall operation, the load must be kept below 1/5th of the total rated load (the load per line must be 0.7t) and sudden braking operations must be avoided.
6. The total rated loads for the single top are obtained by subtracting the corresponding values below from the total rated load of the boom and must not exceed 3.4t.

A	10.5m	14.2m	18.0m	21.7m	25.5m	29.2m	33.0m
Q	0kg	100kg	100kg	200kg	200kg	250kg	250kg

A = Boom length Q = Subtracted load

WORKING RADIUS - LIFTING HEIGHT



NOTES:

1. The deflection of the boom is not incorporated in the figure above.
2. The above chart is for the case where the outriggers are fully extended and where the front jack are used (over 360°).

DIMENSIONS (1/100)

W-KS 303R

