



collective_100

Premium Flexible Workspace

Introducing `collective_100`

`collective_100`

Our Location



collective_100

Our building location

This location is considered the heart of "Silicon" Cremorne - a one square kilometre suburb which is nestled between South Yarra and Richmond – a suburb where culture meets creative and has become home to many leading technology companies and advertising agencies.

Companies like..



Why Cremorne?

The reasons that Cremorne has become the suburb of choice for leading technology and advertising businesses include: -

- ✓ Being situated just 2km south-east from Melbourne's business district
- ✓ It's serviced by Richmond Train Station and multiple lines on the metropolitan train network, as well as trams on Swan Street and Church Street
- ✓ It's adjacent to the M1 City Link freeway
- ✓ The bicycle path that runs along the Yarra river to the CBD.
- ✓ The large variety of shops, bars, cafes and restaurants. Cremorne has been rated the #1 café suburb of Melbourne
- ✓ With the Botanical Gardens and the Yarra River on it's doorstep, it has a walk score rating of 89 which is very high
- ✓ The establishment of The Malt District will further transform this cultural suburb and make it an even more sort after location in Melbourne.

Introducing Our Space



Modern Rustic In Design

Our Breakout Areas



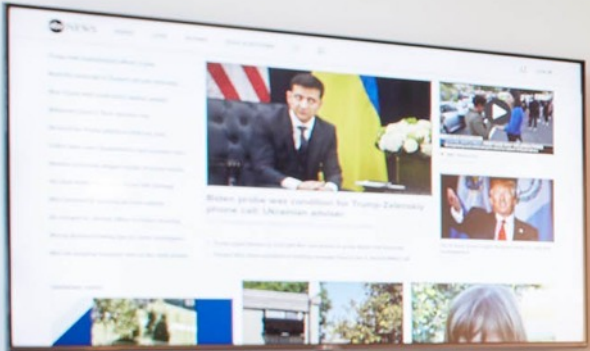
collective_100



collective_100



collective_100



Level 2 Kitchen & Breakout Area



Level 3 Kitchen & Breakout Area

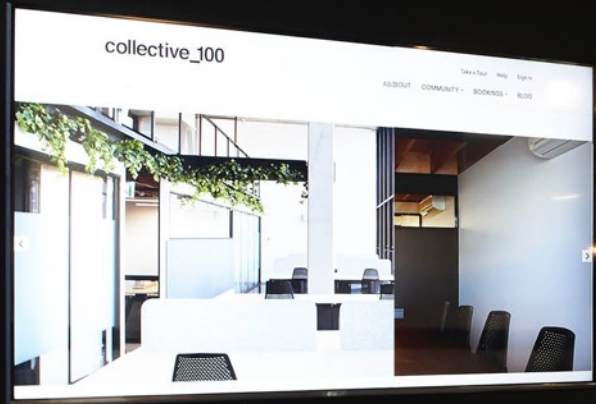


Level 3 Kitchen & Breakout Area



collective_100

Our Meetings Rooms



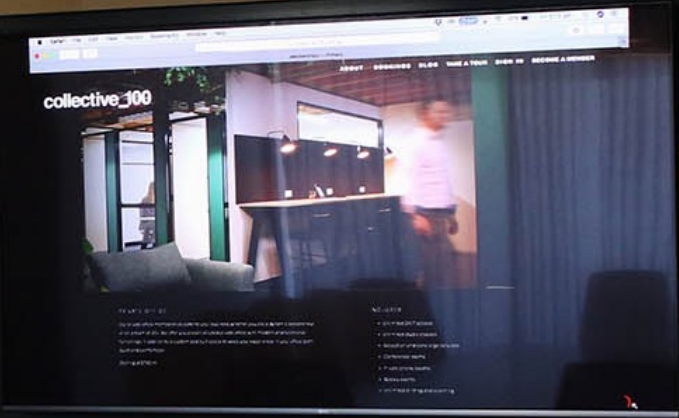
collective_100



collective_100



collective_100



collective_100

Our Quiet Areas



collective_100



collective_100



collective_100

A Few of Our Private Offices



2 Person Office



5 Person Office



6 Person Office



8 Person Office

Office 32

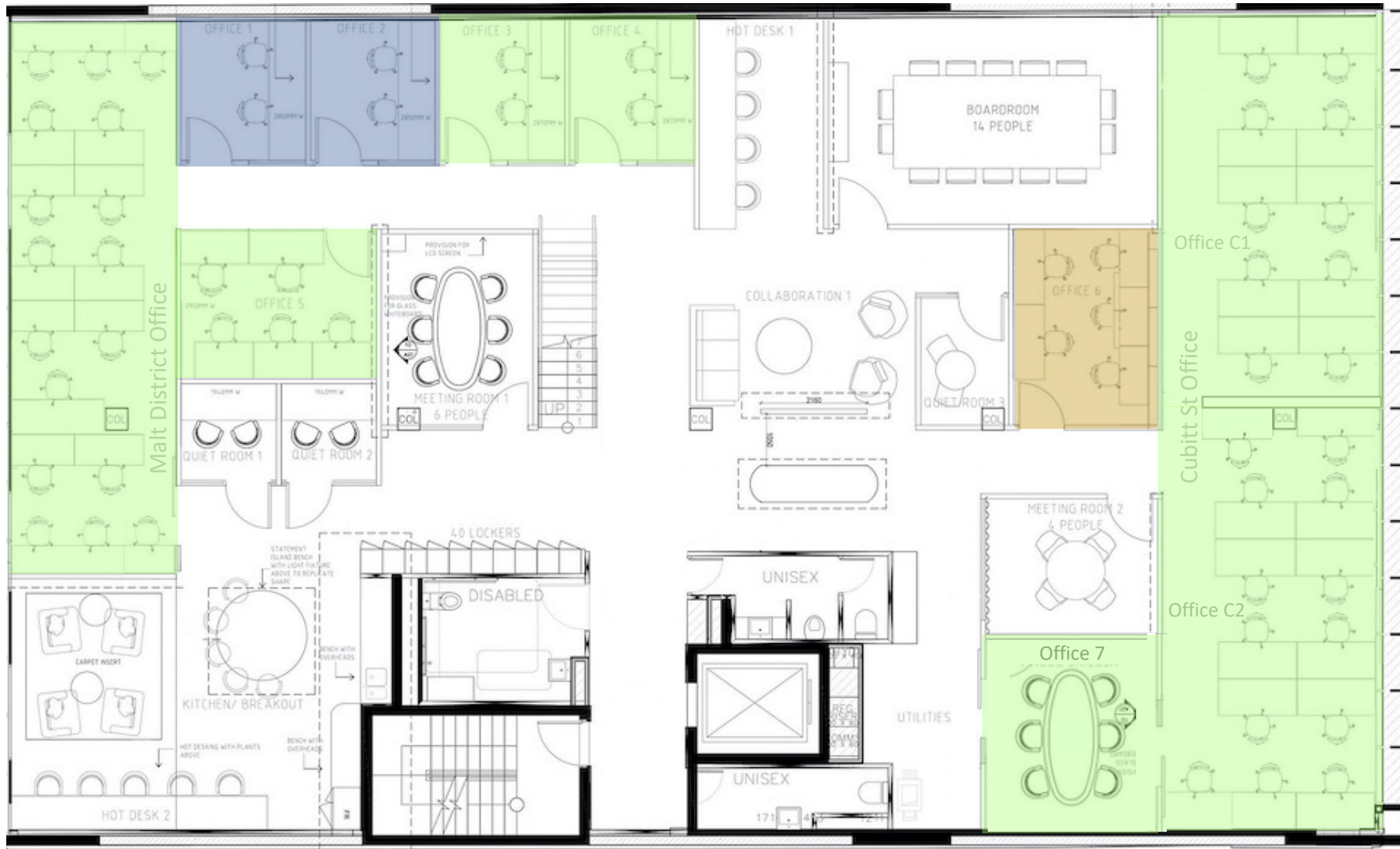


9 Person Office



23 Person Office

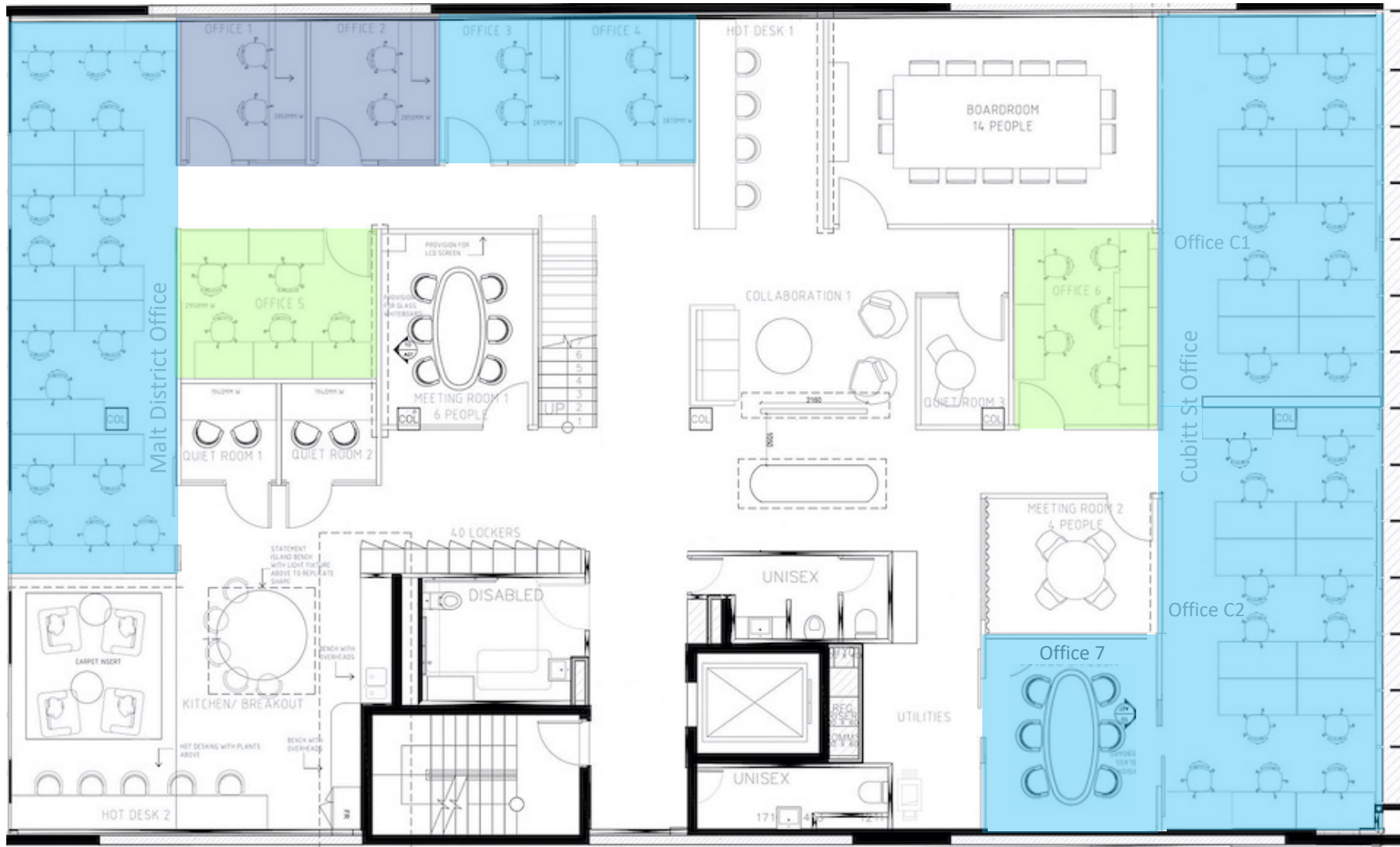
Our Floorspace



2nd level floorplan

- Proposal out
- Available offices
- Unavailable offices

collective_100



Client Specific Facilities

- ✓ Office C1 & C2 = Private Offices
- ✓ Malt District Office = Dedicate desks rooms
- ✓ Office 3,4 & 7 = Dedicate meeting rooms

2nd level floorplan

collective_100



- Proposal out
- Available offices
- Unavailable offices

Mezzanine level floorplan

collective_100



3rd level floorplan

- Proposal out
- Available offices
- Unavailable offices

collective_100

Building tenants

Building tenants include



SONOS



EMPREVO.



Let's take a **walk!**

Barry Hickman | Director

t +61 416 088 851 e Barry@collective100.com.au

collective_100